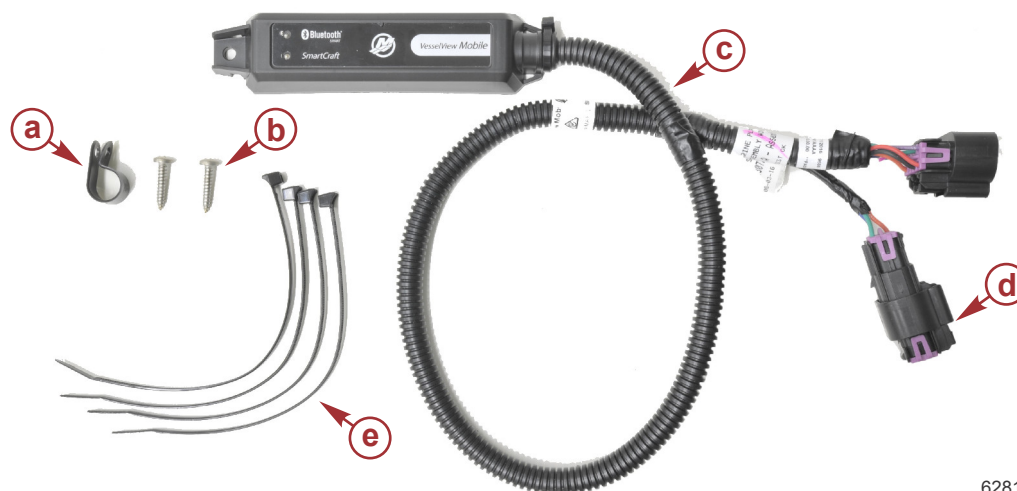


VESSELVIEW MOBILE MODULE

IMPORTANT: This document guides our dealers, boatbuilders, and company service personnel in the proper installation or service of our products. If you have not been trained in the recommended servicing or installation procedures for these or similar Mercury Marine products, have the work performed by an authorized Mercury Marine dealer technician. Improper installation or servicing of the Mercury product could result in damage to the product or personal injury to those installing or operating the product. Always refer to the appropriate Mercury Marine service manual for component removal and installation instructions.

NOTE: After completing installation, place these instructions with the product for the owner's future use.

Components Contained in Kit



62811

Ref.	Qty.	Description	Part Number
a	1	Cable clip	23567
b	2	Screw	69013
c	1	VesselView Mobile module with harness	NSS
d	1	Weather cap	859318T2
e	4	Cable tie	816311T

VesselView Mobile Module Connection

Engine-Mounted Module

NOTE: The location of the engine harness 10-pin connector and terminator will vary depending on the engine model.

1. Depending on the engine model and rigging configuration, the engine harness 10-pin connector will be equipped with a purple weather cap, a yellow terminator, or a red terminator.

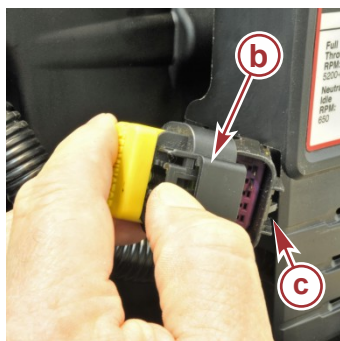
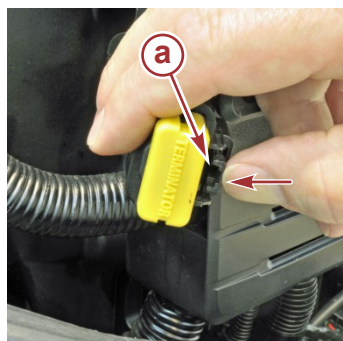
IMPORTANT: 859318T1 must be purchased separately if the engine is not equipped with a yellow or red terminator resistor.



69256

- 1 - Weather cap
- 2 - Yellow terminator
- 3 - Red terminator

2. Locate and remove the terminator or weather cap by pressing the retaining latch and pulling it from the engine harness 10-pin connector. If removing a terminator, retain the terminator for use with the VesselView Mobile harness.

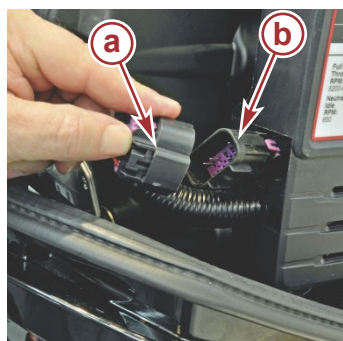


69257

Yellow terminator shown

- a - Terminator retaining latch
- b - Terminator
- c - Engine harness 10-pin connector

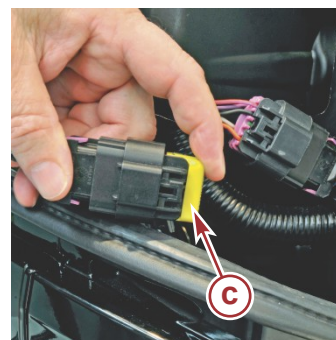
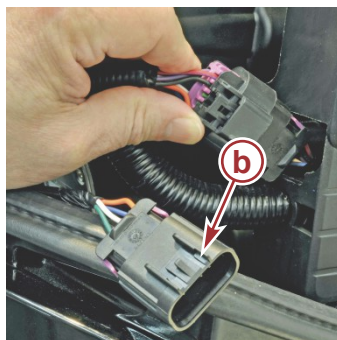
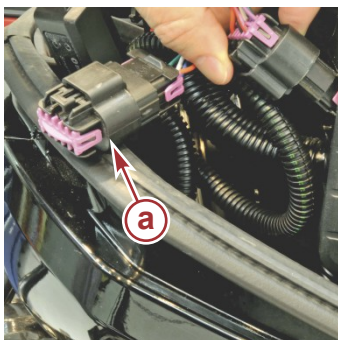
3. After the terminator or weather cap is removed from the engine harness, plug the VesselView Mobile harness 10-pin connector into the engine harness 10-pin connector.



69258

- a - VesselView Mobile harness 10-pin connector
- b - Engine harness 10-pin connector

4. Remove the weather cap from the VesselView Mobile harness terminator connector and install the removed yellow or red terminator into the VesselView Mobile harness terminator connector.

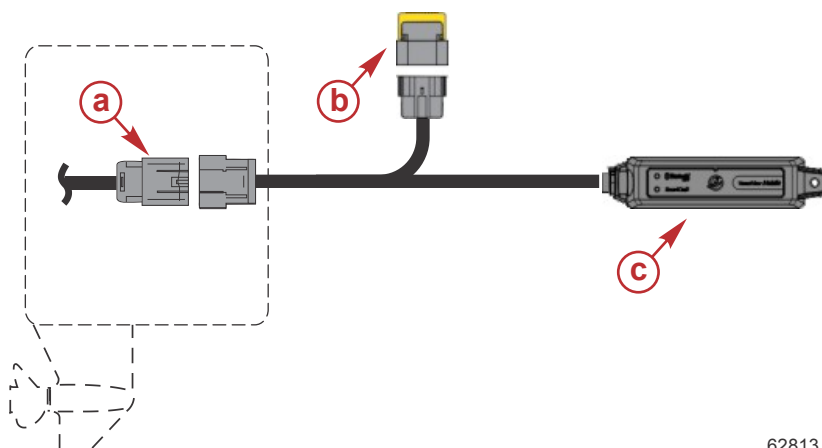


69261

- a - Weather cap
- b - VesselView Mobile harness terminator connector
- c - Yellow terminator

IMPORTANT: The VesselView Mobile harness must not contact the flywheel, throttle and shift components, or other moving parts. Care must be taken to assure that the module and its wiring harness are not in close proximity to the high voltage ignition leads and do not interfere with the throttle or shift mechanisms.

5. Identify an appropriate location and routing path on the engine for the VesselView module and harness. Secure the module and harness to the engine at the selected location with cable ties.



- a - Engine harness terminator connector
- b - Terminator
- c - VesselView Mobile module

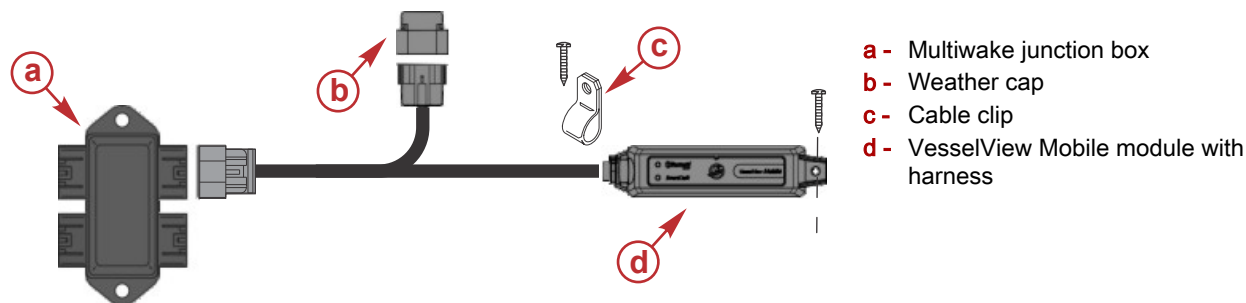
62813

Helm-Mounted Module

The VesselView Mobile module can be mounted at the helm if the vessel is equipped with a junction box and open connection point. The module can also be mounted on the engine.

IMPORTANT: Multiple engine applications may be equipped with more than one junction box. Always connect the VesselView Mobile module to the multiwake junction box on vessels equipped with multiple engines. The multiwake junction box has unswitched 12 V power from the starboard battery.

1. Locate the multiwake junction box.



- a - Multiwake junction box
- b - Weather cap
- c - Cable clip
- d - VesselView Mobile module with harness

62814

2. Select a suitable location for mounting the VesselView Mobile module and harness.
3. Use a 3/32 drill bit to drill two pilot holes to mount the VesselView Mobile module and the harness cable clip.
4. Install the VesselView Mobile harness 10-pin connector into the multiwake junction box.
IMPORTANT: The harness cable clip should be positioned on the harness and slid up close to the module. It may then be secured to the surface with a screw. The cable tie straps should be used to secure the main harness and terminator extension.
5. Mount the VesselView Mobile module with the supplied mounting screws, cable clip, and cable ties.

Bluetooth Pairing

1. Download the VesselView Mobile app from Apple® iTunes® or the Google Play™ store.
2. Turn the key switch(es) to the **ON** position.
3. Verify the SmartCraft LED on the module goes solid green shortly after key up. The Bluetooth LED should be flashing letting you know the module is ready to pair. If the SmartCraft LED is off, this means no engine data is detected by the module which is commonly caused by incorrect termination resistor placement.
4. Open the app and follow the on-screen instructions to connect.

Electrical Specifications

IMPORTANT: The documentation must be consulted in all cases where the symbol , is marked.

IMPORTANT:  Always refer to the Operation Manual included with each engine for fuse holder location, fuse rating, and electrical system overload protection.

This equipment is only intended for connection to 9–16 Vdc, low voltage, electrical systems of boats or similar marine vessels. Do not connect this equipment to any circuit rated in excess of 16 Vac rms, 22.6 Vpk or 35 Vdc, and only connect to boat electrical systems powered by batteries or alternators or otherwise only to circuits separated from main voltages by at least double or reinforced insulation.

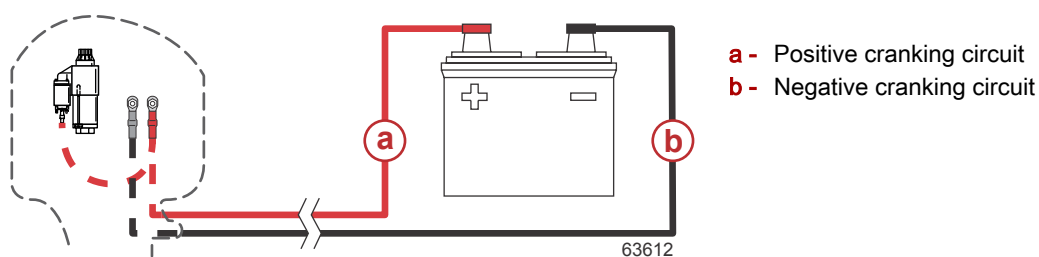
Overload and Fuse Protection

IMPORTANT:  Always refer to the Operation Manual included with each engine for fuse holder location, fuse rating, and electrical overload protection.

Electrical Specifications		
Electrical rating	9–16 V	
Maximum fuse size	Mechanical - 15 A	
	DTS - 5 A	
Maximum rate input current	200 mA	
IP rating	IP4X	
Environmental conditions	Altitude	<3000 m
	Operating temperature	-20–85 °C (-4–185 °F)
	Overvoltage	Category 1
	For use in pollution degree 4 (outdoor use)	

Battery Connections

IMPORTANT:  Always refer to the Installation Manual included with each engine for battery specifications and battery installation procedures.



NOTE: After completing installation, place these instructions with the product for the owner's future use.

Products of Mercury Marine
W6250 Pioneer Road
Fond du Lac, WI 54936-1939

© MERCURY MARINE. All rights reserved. Reproduction in whole or in part without permission is prohibited. Alpha, Axis, Bravo One, Bravo Two, Bravo Three, Circle M with Waves Logo, GO BOLDLY, K-planes, Mariner, MerCathode, MerCruiser, Mercury, Mercury with Waves Logo, Mercury Marine, Mercury Precision Parts, Mercury Propellers, Mercury Racing, MotorGuide, OptiMax, Pro XS, Quicksilver, SeaCore, Skyhook, SmartCraft, Sport-Jet, Verado, VesselView, Zero Effort, Zeus, #1 On the Water and We're Driven to Win are registered trademarks of Brunswick Corporation. Mercury Product Protection is a registered service mark of Brunswick Corporation. All other marks are the property of their respective owners.